



Corrections Division

December 04, 2023

Current Contracted Facilities

- ❑ 2018 – contracted with Jackson County to house City inmates was terminated.
- ❑ Vernon County Jail (Nevada, Missouri – 90 minutes one way)
 - ❑ 70 total bed spaces guaranteed
 - ❑ Will take females if needed
- ❑ Johnson County Jail (Centerview, Missouri – 60-minute one way)
 - ❑ 35 total bed spaces guaranteed
 - ❑ 20 male bed spaces
 - ❑ 15 female bed spaces

Contracted Facilities Costs

Vernon County Jail

FY22 - \$1,756,864.18 (this pays for beds at a rate of \$60 per day/per bed), transportation twice a day, 7 days a week by Vernon County employees, and any medications that the inmates need, and the jail cannot pay for due to costs.

FY23 to date - \$1,108,373.00

Johnson County Jail

FY22 – 920,624.40 (this pays for beds at a rate of \$60 per day/per bed), and any medications that the inmates need, and the jail cannot pay for due to costs.

FY23 to date - \$642,588.10

Types of City Charges

- ❑ **Trespassing** – small business, QuikTrip, Walmart, downtown hotels, Power and Light.
- ❑ **Stealing** – alcohol, cigarettes, citizens purse, food, clothes.
- ❑ **Tampering** – breaking into motor vehicles
- ❑ **Resisting Arrest/Obstruction** – running from police, fighting police to get away.
- ❑ **Assault (DV and Non-DV)** – attempting to stab victim in face with a broom, punching in head/face, spitting on police officer, hitting/kicking KCATA bus drivers, police and detention officers,
- ❑ **Indecent exposure** – performing sex acts in public, exposing self to urinate or defecate in public.
- ❑ **Unlawful use of a weapon** – shooting in an abandoned house, shooting at a vehicle, brandishing a firearm.

Current Jail Statistics

As of 12/04/2023

- ❑ Vernon County Jail
 - ❑ 68 total inmates (65 males/3 females)
 - ❑ 36 sentenced (34 males/2 females)
 - ❑ 5 pending participation in Drug Treatment Court.
 - ❑ 1 pending participation in Mental Health Court.

Current Jail Statistics

As of 12/04/2023

- ❑ Johnson County Jail
 - ❑ 39 total inmates (22 females/17 males)
 - ❑ 22 sentenced (13 females/9 males)
 - ❑ 4 pending participation in Drug Treatment Court.
 - ❑ 4 pending participation in Mental Health Court.
 - ❑ 1 pending participation in Veteran's Treatment Court.

Emergency Release

12/04/2023

- ❑ Emergency releases are done almost every week to accommodate for new arrestees by KCPD.
- ❑ Some emergency releases are done to accommodate for another inmate to be housed.
 - ❑ Ex: if an isolation bed is needed, an inmate may be released to accommodate.
- ❑ **315** total inmate's emergency released between 05/2021 to date.
 - ❑ 38 inmate's emergency released more than one time.
 - ❑ **158** inmates received new charges after emergency released (63% recidivism)
 - ❑ 114 of the re-offending emergency release inmates have been in one or more specialty courts, supervised probation, or on the Domestic Violence Compliance Docket.

Release Over Court Objection

- ❑ From 06/2021 to current date – 70 individuals have been released over court objection. (the Judge wanted them held, however the contracted jail facilities refused to house)
 - ❑ 16 for serious medical issues that could not be handled at the jail facility.
 - ❑ 39 for serious mental health/behavioral issues.
 - ❑ 9 due to space at a facility
 - ❑ 1 for COVID
 - ❑ 15 have been back in custody since they were released over court objection.

Mental Health at the jails

- ❑ University Health sees all inmates virtually at both jail facilities.
- ❑ A contract is being prepared to have a University Health Qualified Mental Health Professional travel to both jail facilities twice a week to see KC inmates in person.
- ❑ Doctor will continue to see KC inmates virtually.
- ❑ **FY23 to date** – Corrections Division has paid University Health \$5,028.75 for telehealth.
- ❑ Vernon County Jail
 - ❑ 16 have been seen by University Health
 - ❑ 14 are on medications
- ❑ Johnson County Jail
 - ❑ 14 have been seen by University Health
 - ❑ 13 are on medications

Rehabilitation and Detention Center Study Recap

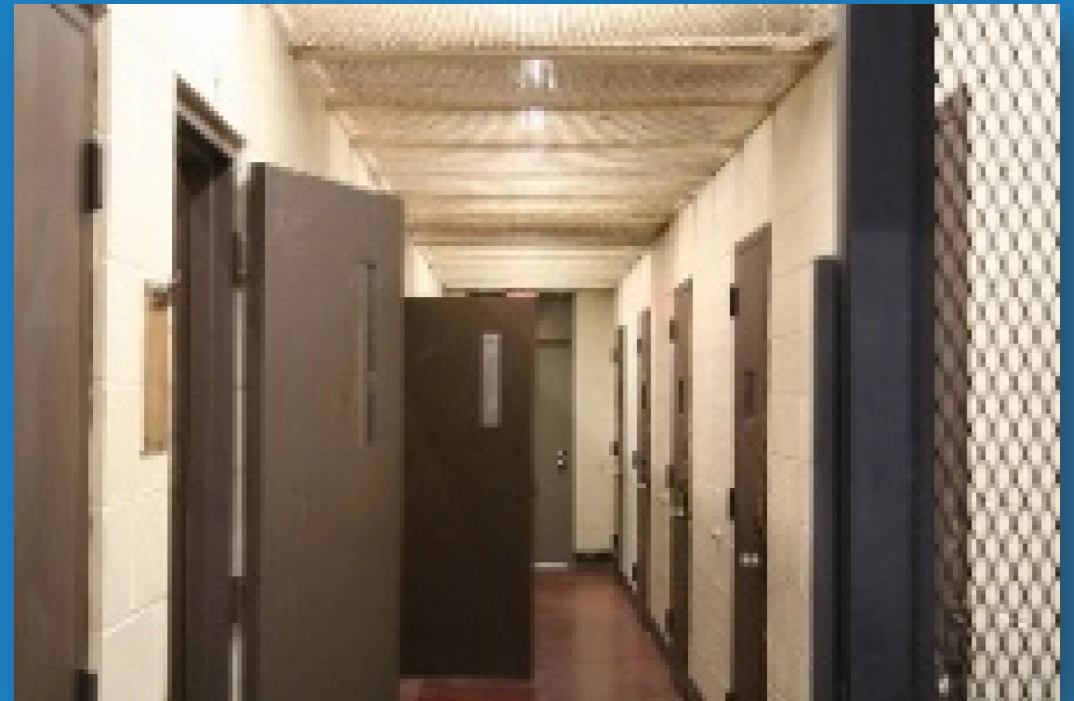
12.06.2023

Municipal Rehabilitation & Detention
Center Community Engagement
Session



Detention Center Facility and Study History

- **1971 – Municipal Correction Institution (MCI) opens**
 - Total Overall capacity of 348 pretrial and sentenced detainees



Detention Center Facility and Study History

- **2005 – Carter Goble Associates Study Recommendations**
 - **350** Bed Facility
 - **175** sentenced
 - **175** pre-trial detainees
 - Total Overall capacity reduced to **328** pretrial and sentenced detainees
 - MCI
 - **228** beds
 - KCPD Headquarters 8th Floor
 - **100** pretrial arrestees and sentenced detainees to maintain capacity



Detention Center Facility and Study History

- **2009 – Kansas City closes MCI and contracts with Jackson County**
 - Total Overall capacity reduced to **260** pretrial and sentenced detainees.
 - Jackson County Regional Correction Center
 - **160** pretrial arrestees and sentenced detainees
 - KCPD Headquarters 8th Floor
 - **100** pretrial arrestees and sentenced detainees to maintain capacity



Detention Center Facility and Study History

- **2015 – KCPD Headquarters 8th Floor was closed**
 - Total Overall capacity increased to **275** pretrial and sentenced detainees
 - Jackson County Regional Correction Center contract expanded to include KCPD beds
 - **100** pretrial arrestees
 - **175** sentenced detainees
- **2018 – Partnership with Jackson County ends and Third-Party Detention contracting begins**
 - Total Overall capacity reduced to **105** pretrial and sentenced detainees
 - Temporary Housing agreement with a local third-party unsuccessful with multiple escapees and one death
 - KCMO begins contracting with Vernon County and Johnson County



Detention Center Facility and Study History

- **2019 Study by SFS Architecture for Site Evaluation – Stand-Alone Facility**
 - Recommendations for a **386-bed detention facility**
 - **310** sentence detainees
 - **22** medical beds
 - **54** mental health beds
- **2022 SFS Study Update - Modern Campus Approach**
 - Recommendations for a **386-bed facility**
 - **310** bed detention facility
 - **76** medical/mental health
 - **Community Rehabilitation and Resource Center**
 - Rehabilitation and Diversionary Programs
 - Re-start Services – Government Issued ID, Court Ordered Requirements, Etc.
 - Initial Re-entry and Court Ordered Program Contacts



Detention Center Facility and Study History

- **2023 Review by JE Dunn - Modern Campus**

- Review confirmed 2022 SFS study recommendation for a 386-bed facility
- Final bed count reached **401** based on adjustments in:
 - Classification
 - Separation of residents



Costs Per Study

- 2005 Carter Goble Study Joint Facility (Jail/Booking/Pretrial)
 - Construction Estimate - **\$5,775,000**
 - MCI Renovation - **\$3M**
- 2022 SFS Stand Alone Facility Estimate
 - Detention Center Total Project Estimate - **\$182.5M**
 - Community Resource Center Estimate - **\$58M**
 - Total DRC and CRC Estimate - **\$240.5M**

Costs Per Study

- 2023 JE Dunn Stand Alone Facility Estimate
 - Detention Center Estimate – **\$179M - \$195M**
 - Community Resource Center Estimate – **\$61M**
 - Total Detention and Community Resource Center – **\$240M - \$256M**



Rehabilitation and Detention Center Study Recap

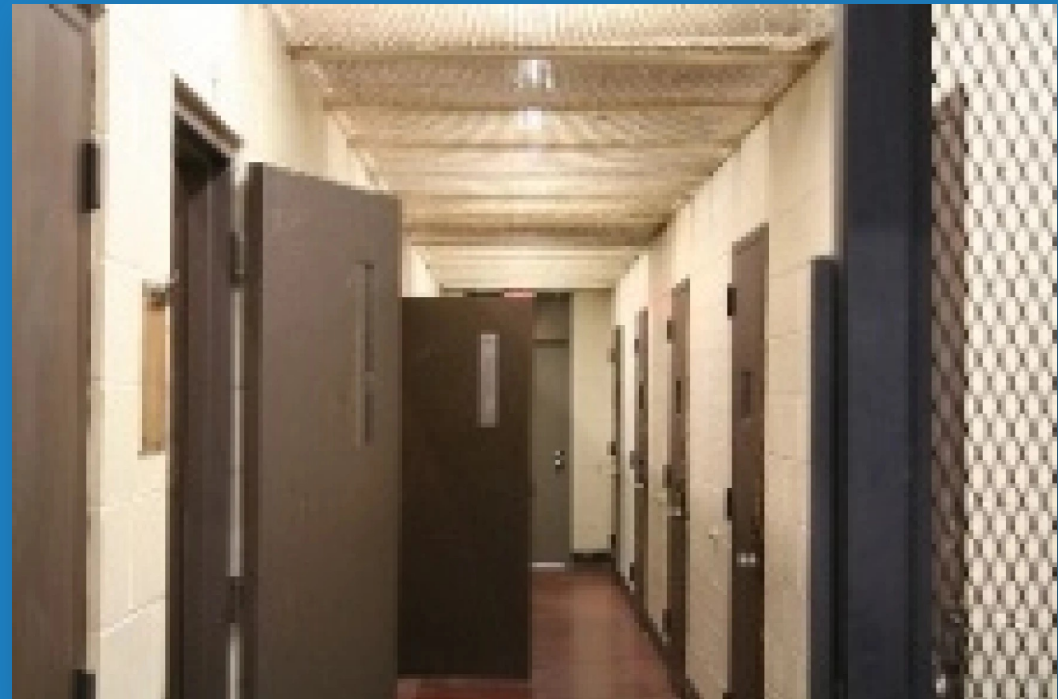
11/28/2023

**Municipal Rehabilitation & Detention
Center Community Engagement
Session**



Detention Center Facility and Study History

- **1971 – Municipal Correction Institution (MCI) opens**
 - Total Overall capacity of 348 pretrial and sentenced detainees



Detention Center Facility and Study History

- **2005 – Carter Goble Associates Study Recommendations**
 - **350** Bed Facility
 - **175** sentenced
 - **175** pre-trial detainees
 - Total Overall capacity reduced to **328** pretrial and sentenced detainees
 - MCI
 - **228** beds
 - KCPD Headquarters 8th Floor
 - **100** pretrial arrestees and sentenced detainees to maintain capacity

Detention Center Facility and Study History

- **2009 – Kansas City closes MCI and contracts with Jackson County**
 - Total Overall capacity reduced to **260** pretrial and sentenced detainees.
 - Jackson County Regional Correction Center (RCC)
 - **160** pretrial arrestees and sentenced detainees
 - KCPD Headquarters 8th Floor
 - **100** pretrial arrestees and sentenced detainees to maintain capacity

Detention Center Facility and Study History

- **2015 – KCPD Headquarters 8th Floor was closed**
 - Total Overall capacity increased to **275** pretrial and sentenced detainees
 - Jackson County Regional Correction Center contract expanded to include KCPD beds
 - **100** pretrial arrestees
 - **175** sentenced detainees
- **2018 – Partnership with Jackson County ends and Third-Party Detention contracting begins**
 - Total Overall capacity reduced to **105** pretrial and sentenced detainees
 - Temporary Housing agreement with a local third-party unsuccessful with multiple escapees and one death
 - KCMO begins contracting with Vernon County and Johnson County

Detention Center Facility and Study History

- **2019 Study by SFS Architecture for Site Evaluation – Stand-Alone Facility**
 - Recommendations for a **386-bed detention facility**
 - **310** sentence detainees
 - **22** medical beds
 - **54** mental health beds
- **2022 SFS Study Update - Modern Campus Approach**
 - Recommendations for a **386-bed facility**
 - **310** bed detention facility
 - **76** medical/mental health
- **Community Rehabilitation and Resource Center**
 - Rehabilitation and Diversionary Programs
 - Re-start Services – Government Issued ID, Court Ordered Requirements, Etc.
 - Initial Re-entry and Court Ordered Program Contacts

Detention Center Facility and Study History

- **2023 Review by JE Dunn - Modern Campus Approach**
 - Review confirmed 2022 SFS study recommendation for a 386-bed facility
 - Final bed count reached **401** based on adjustments in:
 - Classification and separation of residents

Costs Per Study

- 2005 Carter Goble Study Joint Facility (Jail/Booking/Pretrial)
 - Construction Estimate - **\$5,775,000**
 - MCI Renovation - **\$3M**
- 2022 SFS Stand Alone Facility Estimate
 - Detention Center Total Project Estimate - **\$182.5M**
 - Community Resource Center Estimate - **\$58M**
 - Total DRC and CRC Estimate - **\$240.5M**

Costs Per Study

- 2023 JE Dunn Stand Alone Facility Estimate
 - Detention Center Estimate - **\$179M - \$195M**
 - Community Resource Center Estimate - **\$61M**
 - Total Detention and Community Resource Center - **\$240M - \$256M**

Current Detention Status

- **Vernon County** – 70 beds
 - **FY21** cost for beds, transport and medications: \$1,681,912.00
 - To date (March 2023): \$1,540,646.00
 - Payment only for the beds used
- **Johnson County** – 35 beds
 - **FY21** cost for beds and medications: \$1,076,230.00
 - To date (March 2023): \$738,118.00
 - Transport by KCMO Officers and Staff
 - Payment required even if beds are not used



KANSAS CITY MISSOURI

Detention Center Campus – Site Evaluation

11/28/2023

Public Meetings for the Special Committee for
Municipal Rehabilitation and Detention

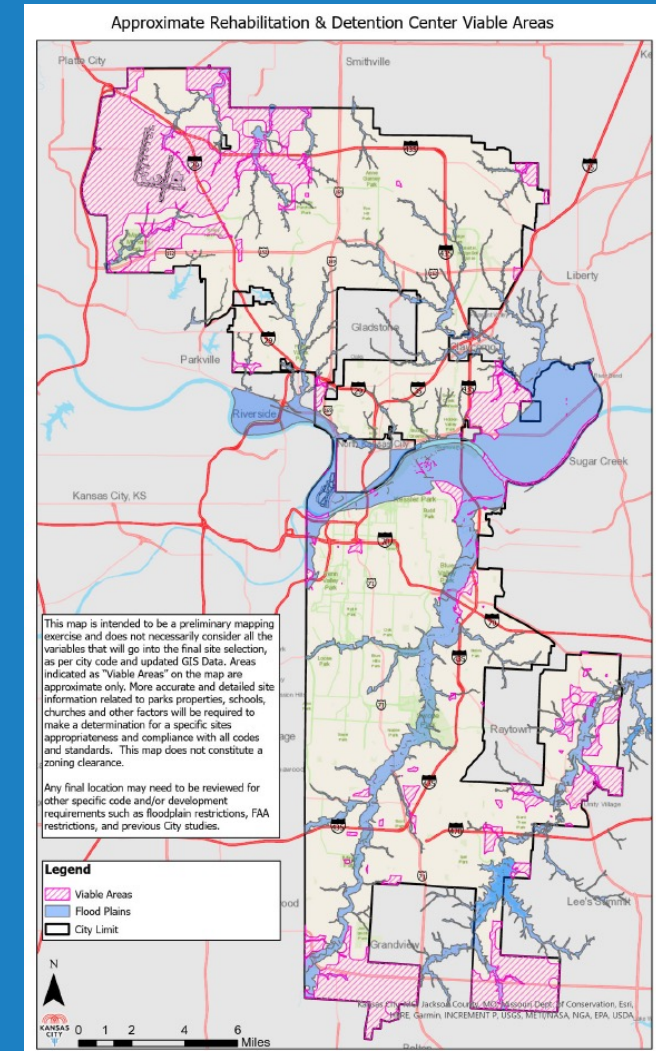


2019 Resolution on the Site Selection

- Resolution 191028 directed staff to complete an evaluation of potential sites for a future detention center.
- City staff issued a request for proposal (RFP) and selected SFS Architecture, Incorporated (SFS) to assist in the site evaluation.
- City staff and the SFS team worked with a collection of both internal and external experts to identify locations, as well as, determine each sites viability.

Site Selection Criteria

- Zoning Requirements - Detention and correctional facilities are subject to the following standards • 88-335-01-A. The property must have a minimum lot area of 2 acres. • 88-335-01-B. No such facility may be on property located within 1,000 feet of R zoning district or within 1,000 feet of any residential dwelling unit; school; library, museum, or cultural exhibit; community center; park, boulevard, or parkway; religious assembly; or day care use, with separation measured in accordance with 88-820-15. • 88-335-01-C. All outdoor recreation areas and all structures to be occupied by inmates must be set back a minimum of 200 feet in the R-80 district and 25 feet in M districts. • 88-335-01-D. The property on which the facility is to be located must provide a minimum lot area of 350 square feet per occupant.
- Other Concerns – Space Requirements, Construction and Infrastructure Costs, Best land use, other City site plans, best practices and miscellaneous site concerns



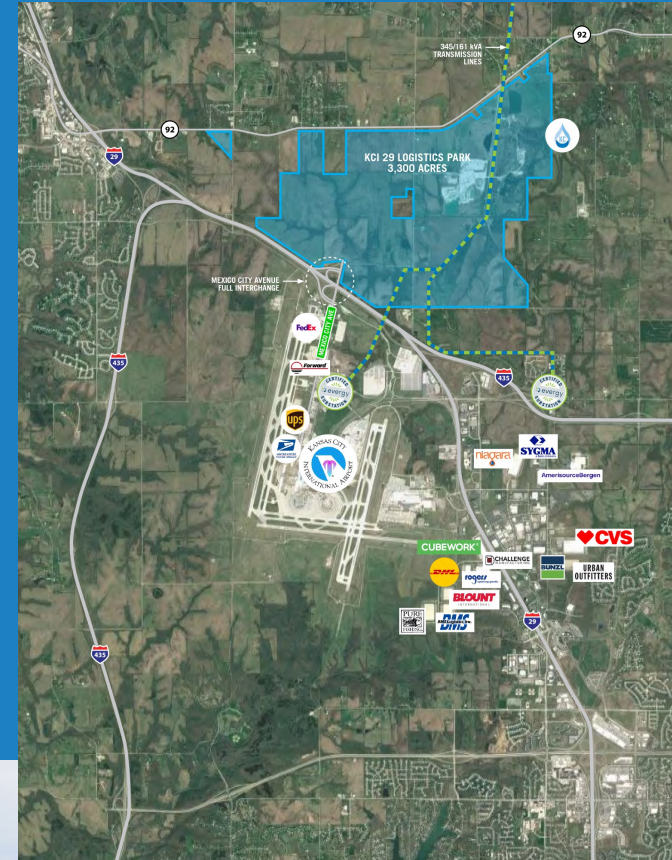
Key Sites Considered

- Regional Correction Center/Jackson County Jail/Annex
 - Exposed pipes, difficult layout and disjointed, residential proximity, infestation and rehabilitation costs significantly higher than a greenfield site
- 8100 Ozark Road – Old Municipal Farm
 - Residential proximity, best use concerns, Property would need to be rezoned and development plan amended
- 8th Floor/Basement of KCPD
 - Complete rehabilitation costs significantly higher than a greenfield site, Potential reduction of current KCPD Headquarters space, Meeting space requirements would require relocation of KCPD headquarters
- Richards-Gebaur Area
 - High infrastructure costs, ownership concerns and best use concerns



Key Sites Considered

- KCI airport property
 - High infrastructure costs, proximity issues, FAA clearance concerns & best use concerns
- FBI Headquarters - 1300 Summit Street
 - Residential proximity and high property expense



Final Sites Considered as Preferred Location

- East Bottoms – 7750 E Front Street
 - Special Use Plan Required, Extremely Limited Space, Other master city master plans for the site ,Potential high infrastructure costs, Best Practices Concern with multiple story facility
- Harlem Site East of Downtown Airport
 - Concern on limited space, FAA clearance issues, Infrastructure cost issues, Residential proximity, Public input concerns



Recommended Site – US 40 Highway near I-70

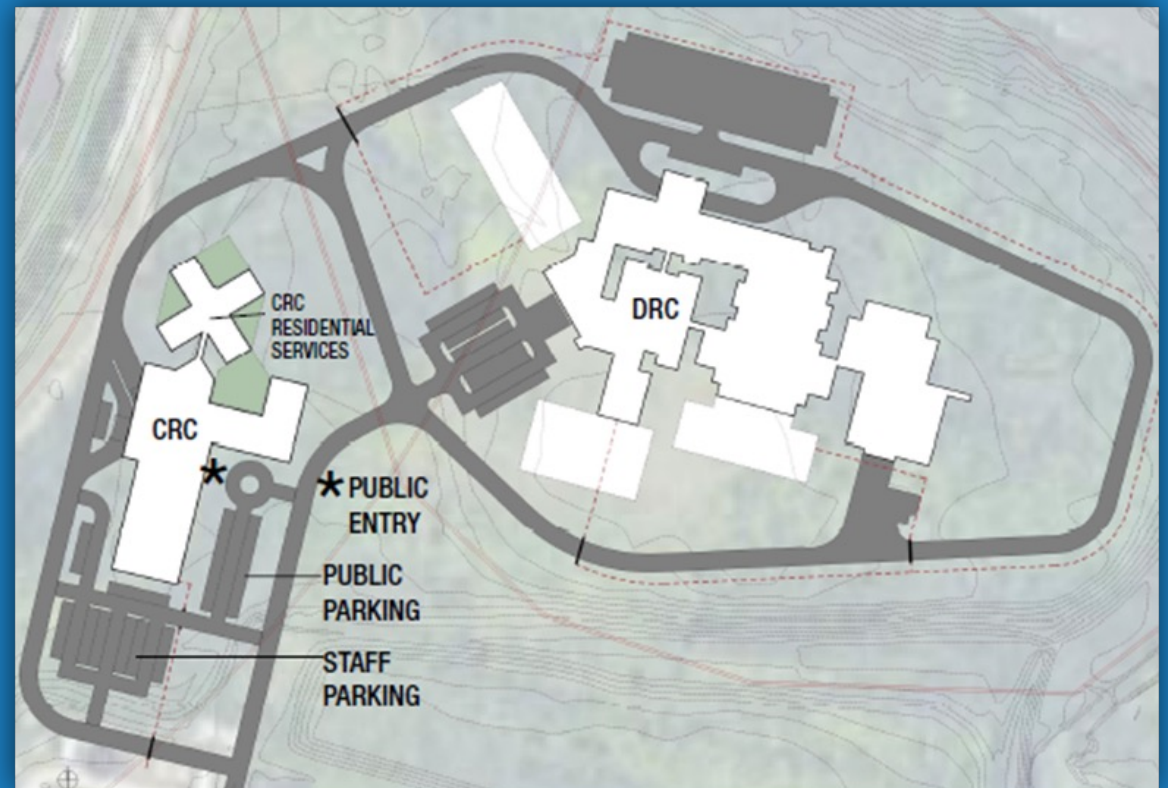
- Meets the zoning requirements
- Included sufficient space
- Minimal additional infrastructure costs
- KCATA bus access
- Flexibility for other services onsite.



Additional Final Site Evaluation

Kansas City owned properties

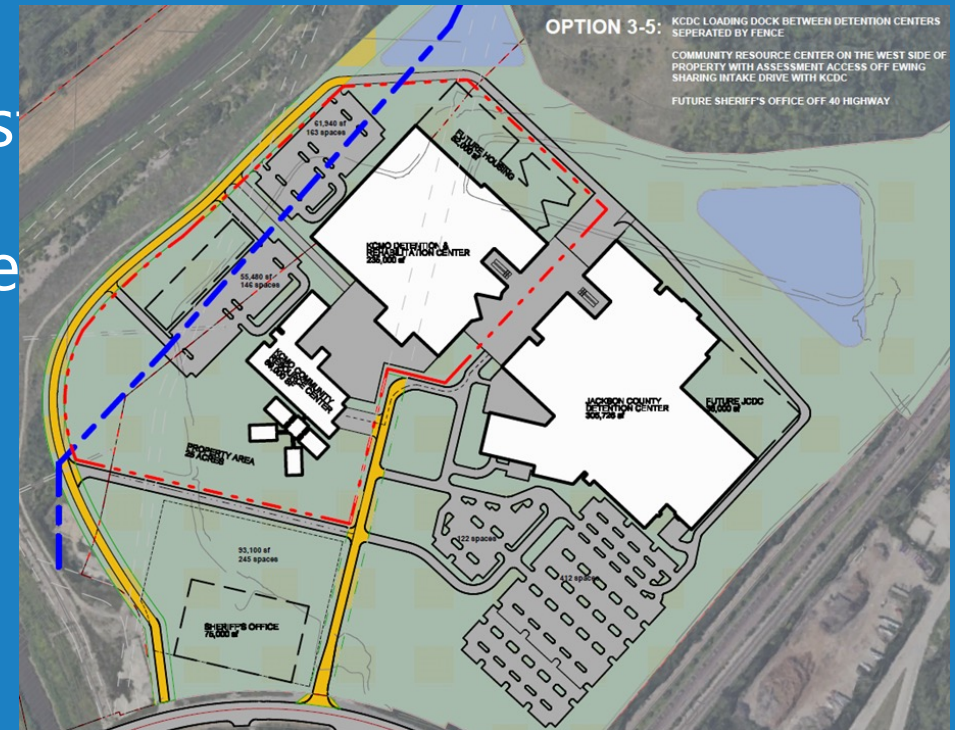
- The Kansas City property is outside the floodplain but, is a former city landfill site. The remediation costs are estimated to be between \$5M-\$10M..
- The time to remediate the Kansas City property and get approval from Missouri Department of Natural Resources (MDNR) could extend for years on this site.



Additional Final Site Evaluation

Jackson County Northwest Property

- Floodplain Remediation required at a cost of \$1M-\$2M.
- The City would also need to purchase the property from Jackson County.
- In 2022 Jackson County was a willing seller of a portion of the property in the Northwest quadrant. That continued willingness would need to be evaluated.
- Jackson County may reduce the size of the property to be purchased due to planned future County facilities.





Detention Center Public Outreach

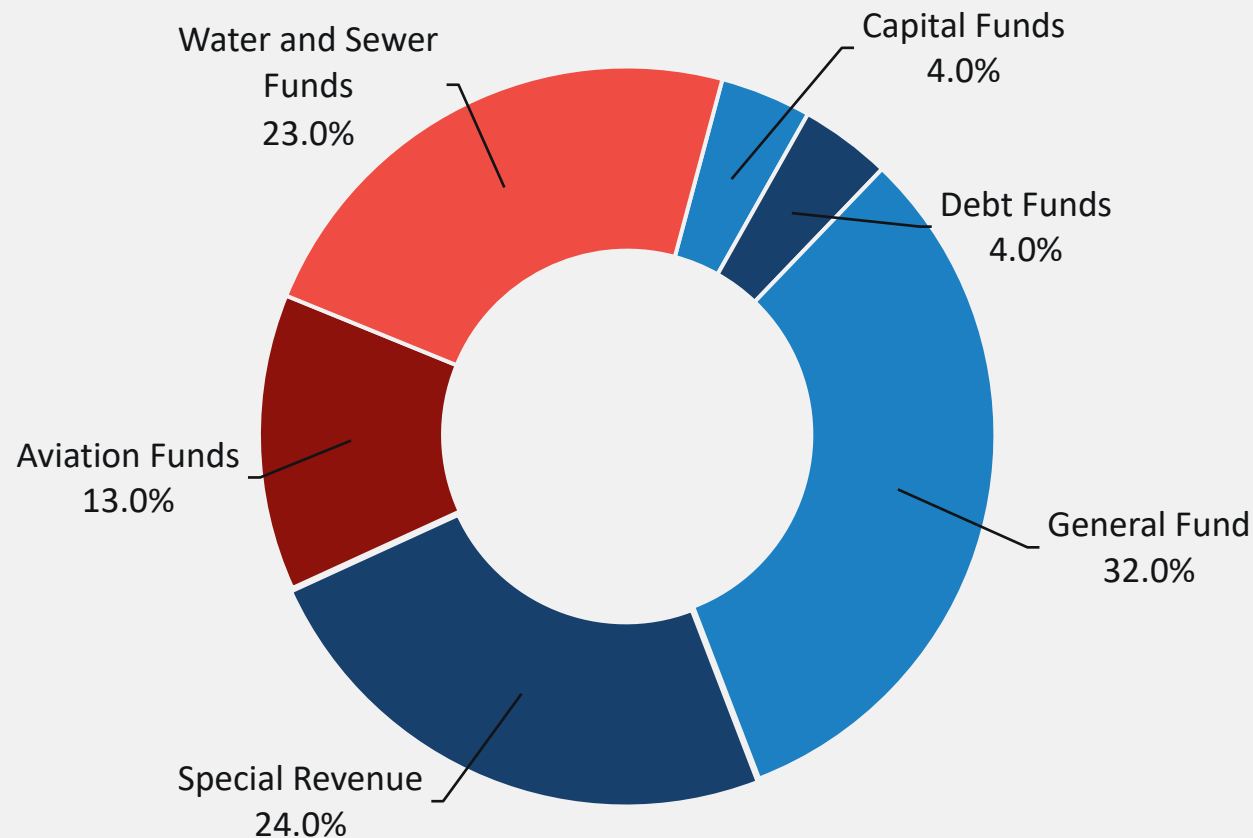
Finance Department

Detention Center Public Outreach - Kansas City, MO



FY 2023-24 Revenue by Fund Type

\$2.01 billion



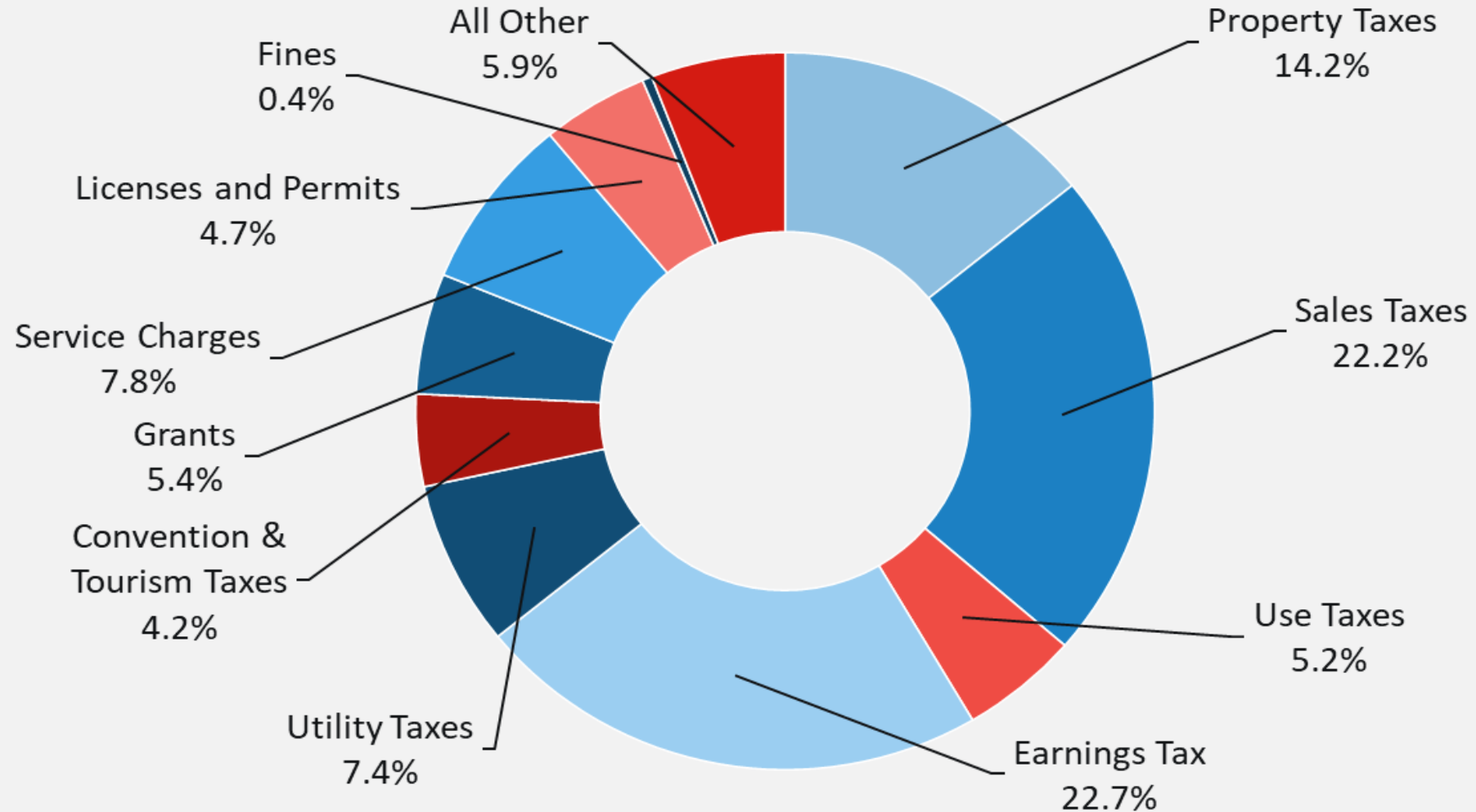
The City's Budget can be divided into thirds:

- **1/3 – Business Type Activities**
 - Water/Sewer/Airport
- **1/3 – Special Revenue, Capital and Debt Funds**
 - Special purpose
- **1/3 – General Fund**
 - Primary operating fund

General Fund and Special Revenue Funds comprise **Governmental Activities**

Governmental Activities Revenue

\$1.328 billion



Major Revenue Sources

Earnings Tax – a **one percent** tax levied on employee wages and business net profits - **\$290 million**

Sales Tax – a tax on **retail sales** of tangible personal property or rendering **taxable service** at retail within the City limits - **\$285 million**

Property Tax – a tax based on the **assessed value** of taxable tangible **real and personal property** owned on January 1 of a calendar year - **\$180 million**

Utility Tax – a **license fee** imposed on utility companies that is typically passed through to utility customers for service within City limits - **\$96 million**

Sales Tax by Purpose

Title	Rate	Expiration	Uses
Capital Improvement	1.000%	2038	65% for citywide and 35% allocated by PIAC
Public Mass Transit	0.500%	None	Public transportation including bus service and streetcar
KCATA	0.375%	2034	Passed thru to KCATA for maintaining transit system
Fire	0.500%	2036	0.250% for Fire Department Operations 0.250% for Fire Capital
Public Safety	0.250%	2026	Capital improvements for public safety facilities and equipment
Parks	0.500%	None	Maintenance and operation of parks, boulevards, parkways, and community centers
Central City	0.125%	2027	Dedicated to economic development projects south of 9 th St, north of Gregory Boulevard, east of Indiana Ave, and west of Paseo Blvd
Total	3.250%		

Public Safety Sales Tax

- Renewed by voters in November 2010
 - **0.25%** - one-quarter percent
 - **15 years** – expires June 30, 2026
 - Currently generates about **\$22 million annually** in net revenues
 - Police, emergency medical services, and emergency management uses – public safety
 - Facilities, vehicles, capital improvements, and capital equipment

Major Projects Funded with Public Safety Sales Tax

- Public Safety Radio Dispatch System
- Construction or renovation of:
 - Police Headquarters
 - East Patrol/Crime Lab
 - North Patrol Station
- KCPD Helicopter
- Backup Generators for Community Centers
- CAD/RMS System
- Various ADA Improvements to Police Facilities
- Robotic Surveillance Equipment
- In-Vehicle Cameras

Options for Detention and Rehabilitation Center Funding

- Issuance of special obligation bonds to finance construction
 - Recommended source of repayment – renewed Public Safety Sales Tax
 - Other revenue sources are not viable/available for this purpose
- Operation and maintenance of the facility – add to renewal ballot language as an appropriate use of sales tax

Questions?