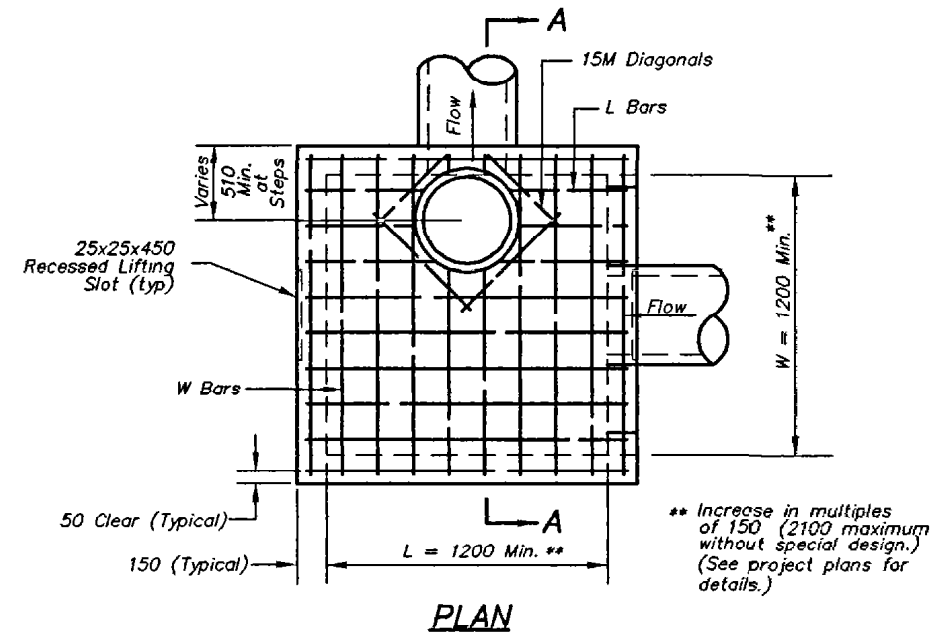
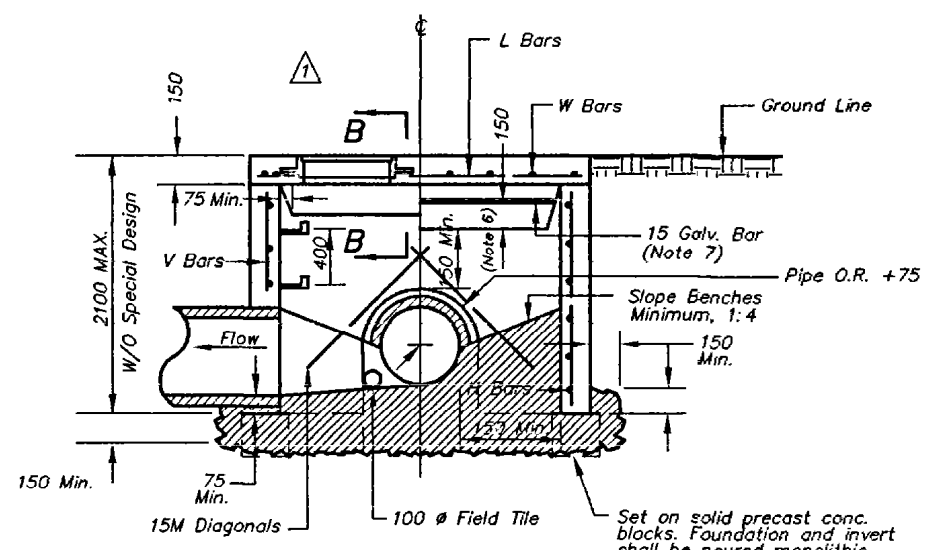


CORNER DETAIL

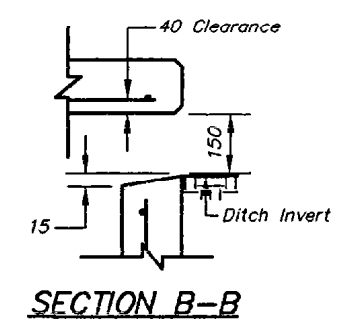


PLAN



SECTION A-A
(Precast - See Note 12)

- GENERAL NOTES:**
1. Locate ring and cover over outlet.
 2. All work and materials shall conform to APWA Sect. 2600.
 3. Use 20 chamfer strip or 10 edger tool on all exposed concrete corners, including bottom of top slab at the openings.
 4. Steps required at 400 O.C. when depth from top of casting to invert exceeds 1200.
 5. Boxouts will not be allowed to project through the corners of the structure, and the minimum distance between box outs is 150 with 1 corner bar.
 6. The minimum reinforcing shall be 1 H-bar over a cast-in place pipe and 2 H-bars over a precast boxout.
 7. Limit opening height to 150 with 15 ϕ galvanized smooth bars extending to corner rebars.
 8. Show field inlet orientation on plans plus number and size of openings. Locating point at center of structure.
 9. O.R. = outside pipe radius
 10. Use KCMO Standard MH-RC ring and cover Type 4.
 11. 100" ϕ field tile or precast hole shall be located at entering pipes. These tiles or openings shall be capped with 6 galvanized wire mesh on the outside of the inlet and clear the invert and base concrete.
 12. For cast-in-place structures, V bars shall extend 75 into base and clear soil by 75, add 2-15M diagonal bars under pipes, and the invert may be poured separate (75 Min.).



SECTION B-B

REINFORCING

BAR	BAR SIZE	SPACING (mm)
H	10M	300
V	10M	300
L	15M	150
W	15M	150

NOTE: All dimensions in mm.

7/1/93 KCMO STD. DRAWING SUPPLEMENT	
ADOPTED:	DIRECTOR OF PUBLIC WORKS
AMERICAN PUBLIC WORKS ASSOCIATION	
KANSAS CITY METROPOLITAN CHAPTER	
FIELD INLET DETAILS (METRIC)	STANDARD DRAWING NUMBER FI - 1(M) ADOPTED: APRIL 17, 1993