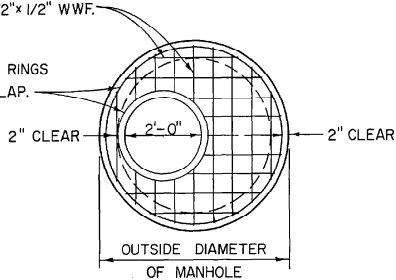
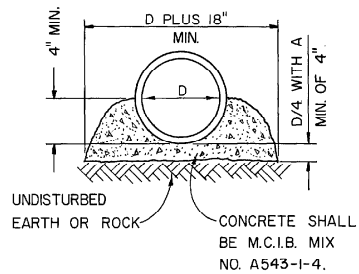


NO. 5 BARS AT 6" CENTERS BOTH WAYS OR 4x4-1/2"x1/2" WWF.

NO. 4 BAR RINGS WITH 12" LAP.



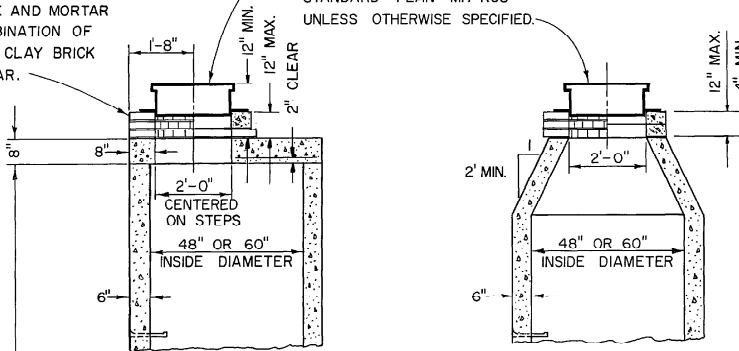
REINFORCING DETAIL OF COVER SLAB



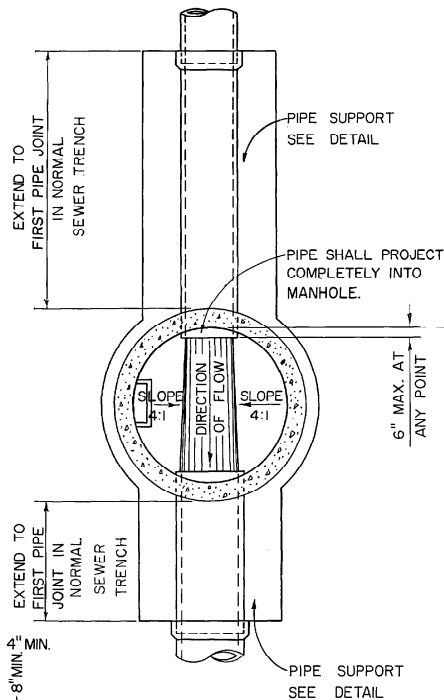
PIPE SUPPORT DETAIL

MANHOLE TOP ADJUSTMENT SHALL BE ACCOMPLISHED BY THE USE OF CONCRETE ADJUSTING RINGS (4" MIN. THICKNESS) OR OF CLAY BRICK AND MORTAR OR A COMBINATION OF RINGS AND CLAY BRICK AND MORTAR.

STANDARD MANHOLE FRAME AND COVER-SEE STANDARD PLAN MH-RC3 UNLESS OTHERWISE SPECIFIED.

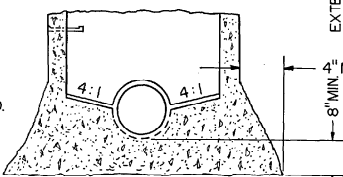


USING CONICAL SECTION



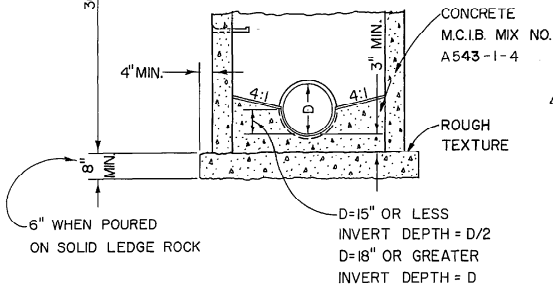
NOTE: MINIMUM DISTANCE BETWEEN ANY TWO ADJACENT PIPES SHALL BE 4".

MANHOLE STEPS SHALL BE SPACED AT A MAXIMUM OF 16" AND OF A TYPE AND SIZE APPROVED BY THE DIRECTOR OF PUBLIC WORKS.



MONOLITHIC CONSTRUCTION

THIS DRAWING SUPERSEDES DRAWING MH-CP ADOPTED JANUARY 17, 1968 AND ALL PREVIOUSLY ADOPTED STANDARDS FOR CAST IN PLACE MANHOLES.



STAGE CONSTRUCTION

ADOPTED . . . .

DIRECTOR OF PUBLIC WORKS DATE

ENTRY NO. 86088

KANSAS CITY, MO.  
DEPARTMENT OF  
PUBLIC WORKS  
ENGINEERING  
DIVISION

APPROVED

CITY ENGINEER

DATE

REVISED

MANHOLE - CAST  
IN PLACE  
4'-0" OR 5'-0" DIA.

STANDARD  
PLAN

MH-CP