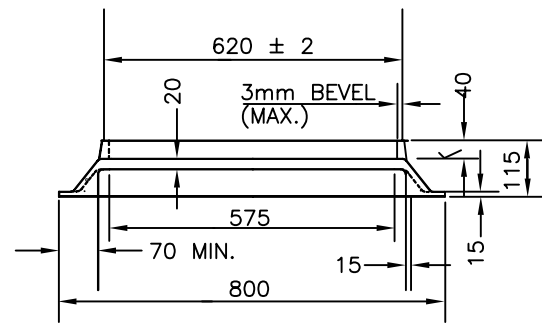
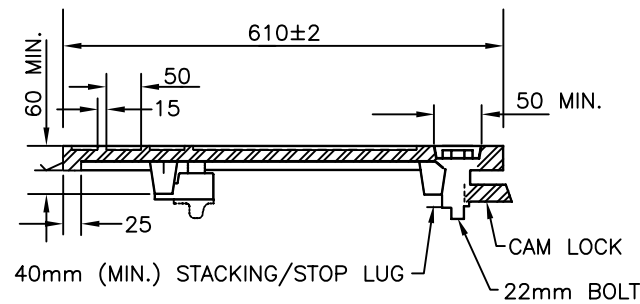
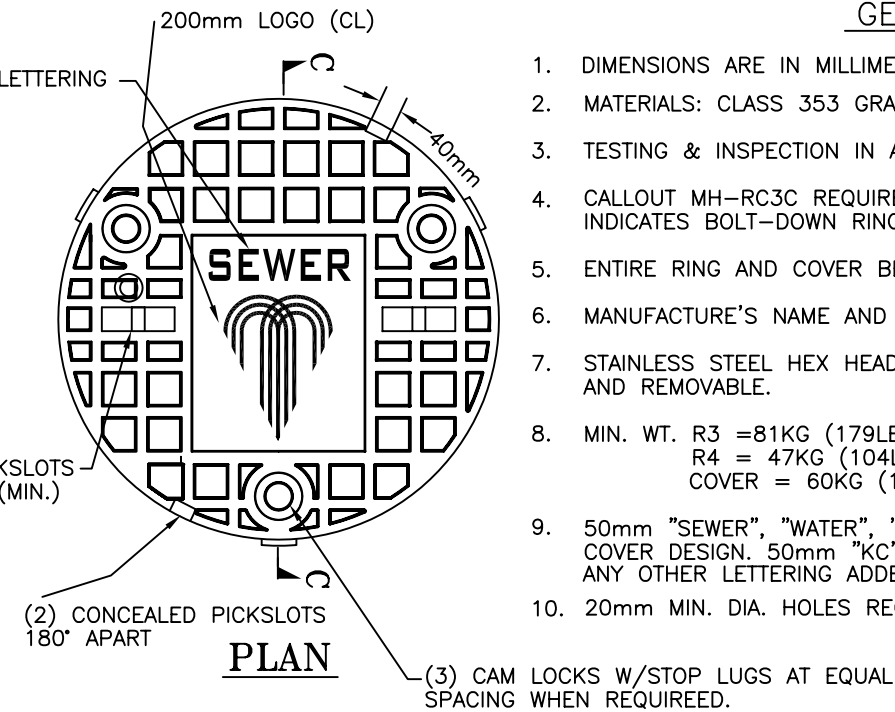


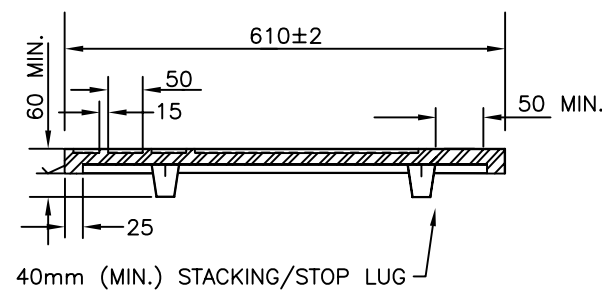
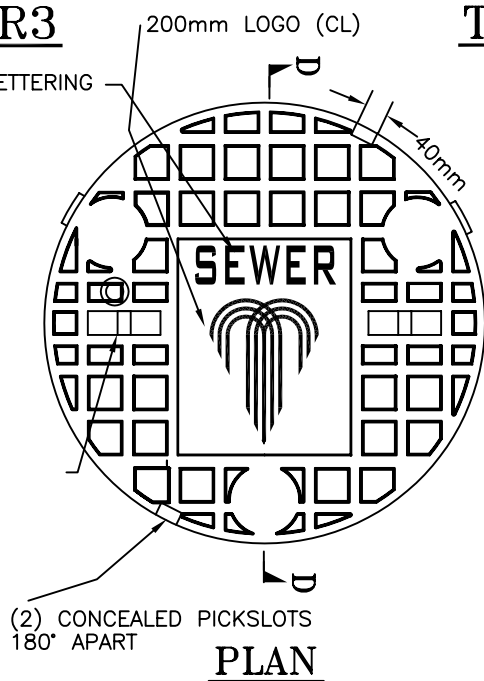
TYPE R3



TYPE R4



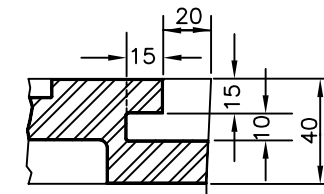
MH COVER WITH CAM LOCKS



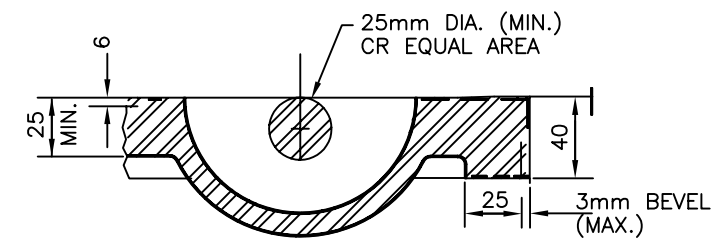
MH COVER WITHOUT CAM LOCKS

GENERAL NOTES

1. DIMENSIONS ARE IN MILLIMETERS UNLESS OTHERWISE NOTED
2. MATERIALS: CLASS 353 GRAY CAST IRON (ASTM A48) OR STAINLESS STEEL.
3. TESTING & INSPECTION IN ACCORDANCE WITH AASHTO M303/ASTM A48.
4. CALLOUT MH-RC3C REQUIRES CAM LOCKS. MH-RC3 DOES NOT. MH-RC33 INDICATES BOLT-DOWN RING AND COVER W/CAM LOCKS.
5. ENTIRE RING AND COVER BEARING SURFACE SHALL BE MACHINED.
6. MANUFACTURE'S NAME AND HEAT DATE SHALL BE MARKED ON EACH CASTING.
7. STAINLESS STEEL HEX HEAD CAM LOCK BOLT SHALL BE FLUSH WITH LID SURFACE AND REMOVABLE.
8. MIN. WT. R3 = 81KG (179LB)
R4 = 47KG (104LB)
COVER = 60KG (132LB)
9. 50mm "SEWER", "WATER", "STORM", OR "PRIVATE" SHALL BE INCLUDED IN THE COVER DESIGN. 50mm "KC" AND "MO" MAY BE INCLUDED IN THE COVER DESIGN. ANY OTHER LETTERING ADDED TO COVER SHALL NOT EXCEED 15mm HIGH.
10. 20mm MIN. DIA. HOLES REQUIRED IN 3 EQUALLY SPACED GUSSETS.



CONCEALED PICKSLOT DETAIL



SURFACE PICKSLOT & EDGE DETAIL

Kansas City, Missouri
Public Works Department

MANHOLE RING AND COVER

STANDARD DRAWING NUMBER
MH-RC (METRIC)