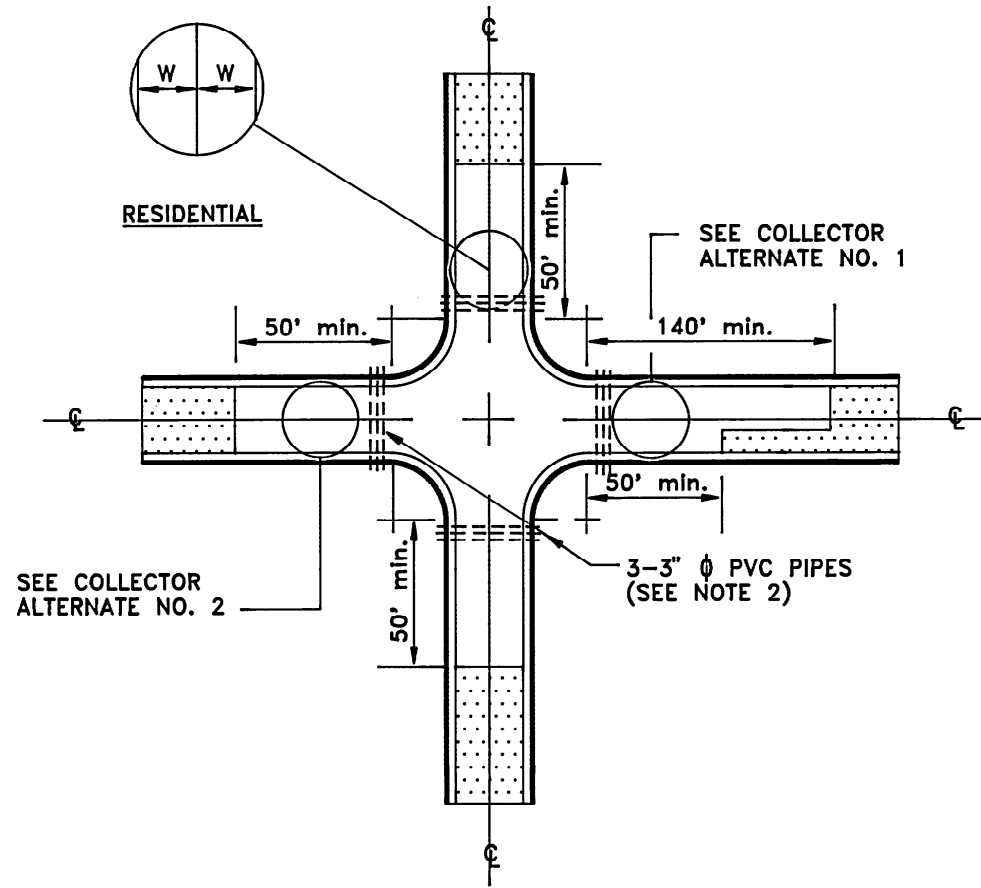
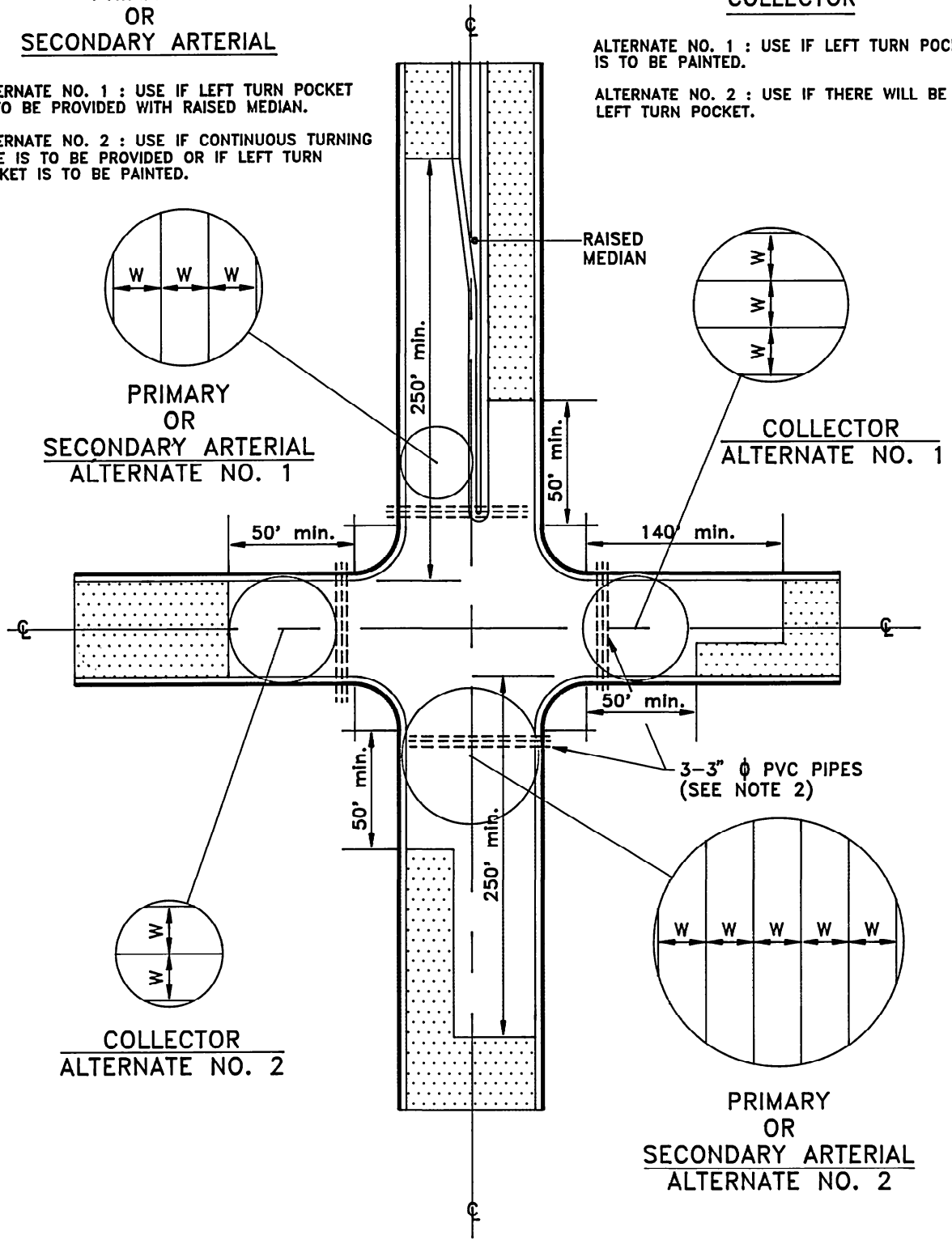


PRIMARY OR SECONDARY ARTERIAL

ALTERNATE NO. 1 : USE IF LEFT TURN POCKET IS TO BE PROVIDED WITH RAISED MEDIAN.
 ALTERNATE NO. 2 : USE IF CONTINUOUS TURNING LANE IS TO BE PROVIDED OR IF LEFT TURN POCKET IS TO BE PAINTED.

COLLECTOR

ALTERNATE NO. 1 : USE IF LEFT TURN POCKET IS TO BE PAINTED.
 ALTERNATE NO. 2 : USE IF THERE WILL BE NO LEFT TURN POCKET.



NOTE

1. FOR JOINT DETAILS SEE STANDARD DRAWING NUMBER J-1.
2. THREE 3 INCH DIAMETER PVC PIPE CROSSINGS WITH PLUGS SHALL BE CONSTRUCTED AT EACH RADIAL POINT FOR STREET LIGHTS.
3. W = LANE WIDTH.
4. FOR POLICY ON PORTLAND CEMENT CONCRETE INTERSECTION SEE DOCUMENT NUMBER 890332 ADOPTED May 31, 1989

ADOPTED	
Director of Public Works	Date
Entry No. _____	
Kansas City, Missouri	
Public Works Department	
Engineering Division	
P.C. CONCRETE INTERSECTION	STANDARD DRAWING NUMBER I-1