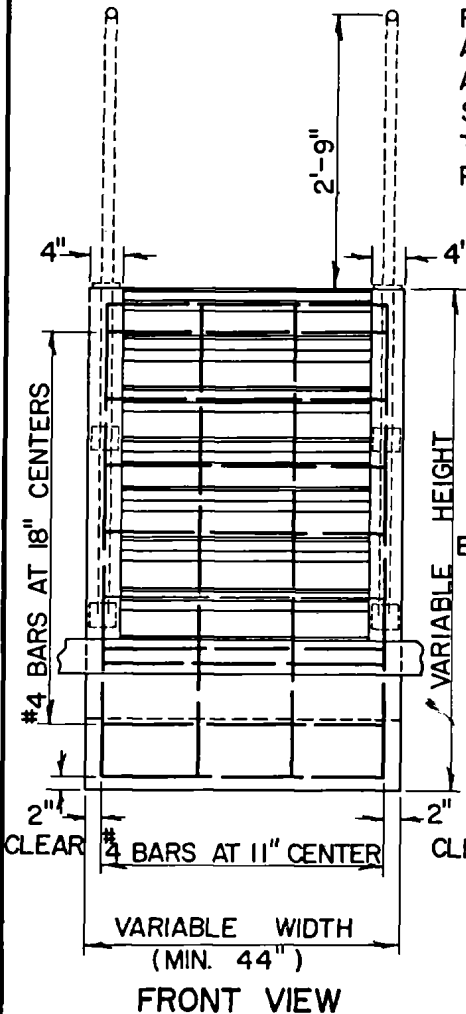
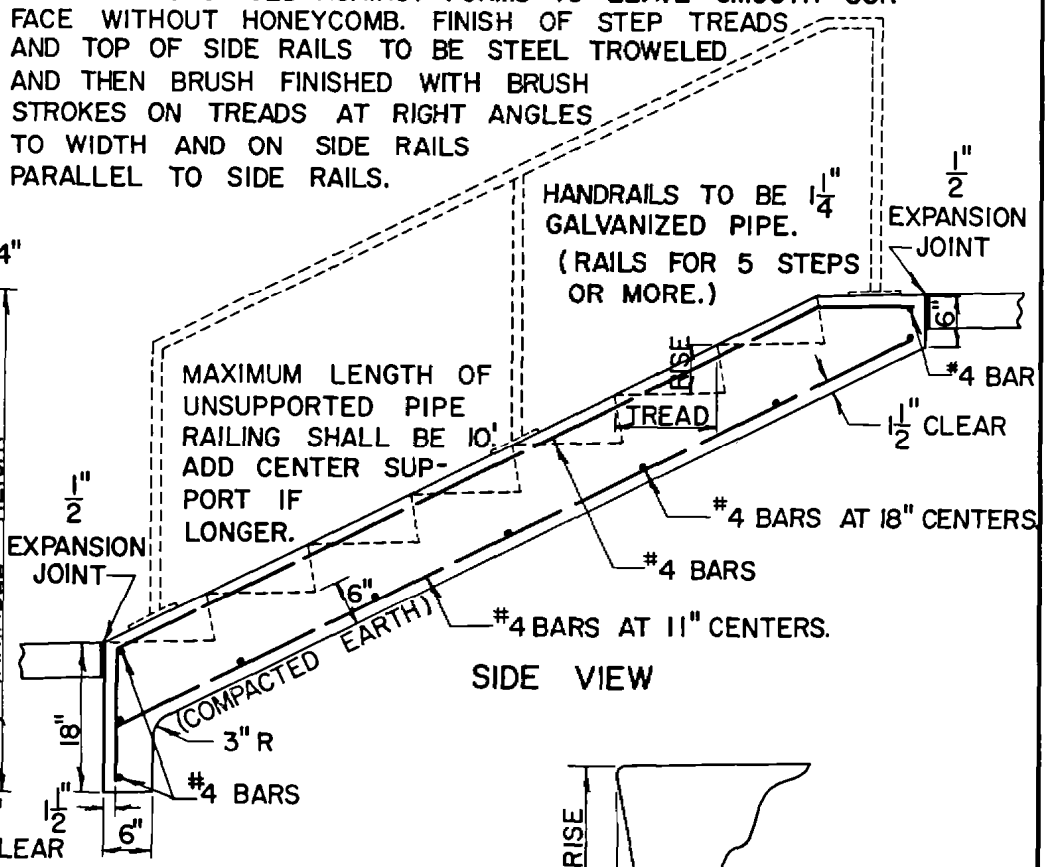


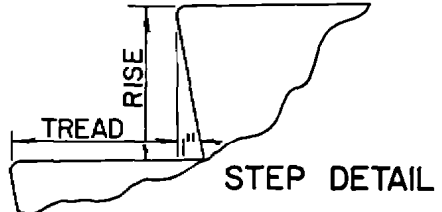
NOTE: RISER FACE FORMS AND INSIDE SIDE RAIL FORMS SHALL BE BEVELED AT BOTTOM EDGE TO PERMIT COMPLETE FINISHING OF STEP TREADS WITHOUT REMOVAL OF FORMS. ALL CONCRETE SHALL BE THOROUGHLY TAMPED AND SPADED AGAINST FORMS TO LEAVE SMOOTH SURFACE WITHOUT HONEYCOMB. FINISH OF STEP TREADS AND TOP OF SIDE RAILS TO BE STEEL TROWELED AND THEN BRUSH FINISHED WITH BRUSH STROKES ON TREADS AT RIGHT ANGLES TO WIDTH AND ON SIDE RAILS PARALLEL TO SIDE RAILS.



FRONT VIEW

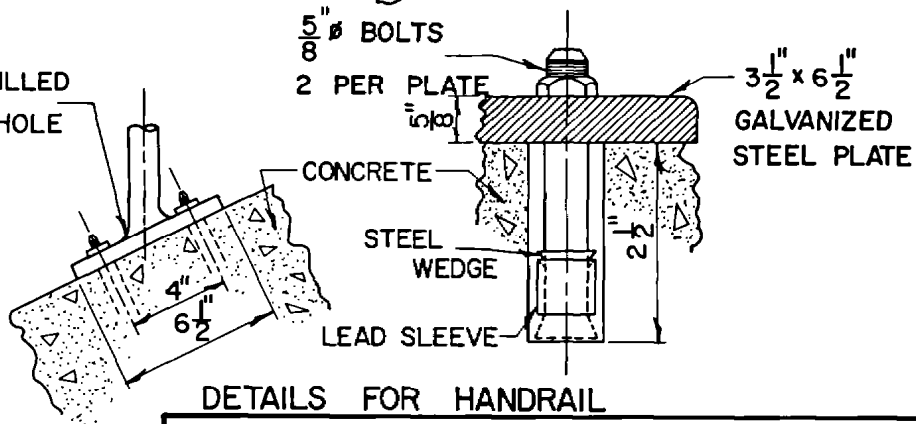


SIDE VIEW



STEP DETAIL

NOTE: CONCRETE SHALL BE -  
M.C.I.B. MIX NO. A-550- $\frac{3}{4}$ -4  
ALL HARDWARE SHALL BE GALVANIZED.



DETAILS FOR HANDRAIL

SLOPE	TREAD	RISE
1 1/2 : 1	10 1/2"	7"
2 : 1	12"	6"
3 : 1	15"	5"

**ADOPTED**

---

DIRECTOR OF PUBLIC WORKS                      DATE

ENTRY NO. 82052

KANSAS CITY, MISSOURI  
DEPARTMENT OF  
PUBLIC WORKS  
ENGINEERING  
DIVISION

APPROVED	REVISED
_____	_____
DATE	_____

**STEPS**  
**REINFORCED CONCRETE**

STANDARD  
PLAN  
**S-RC**