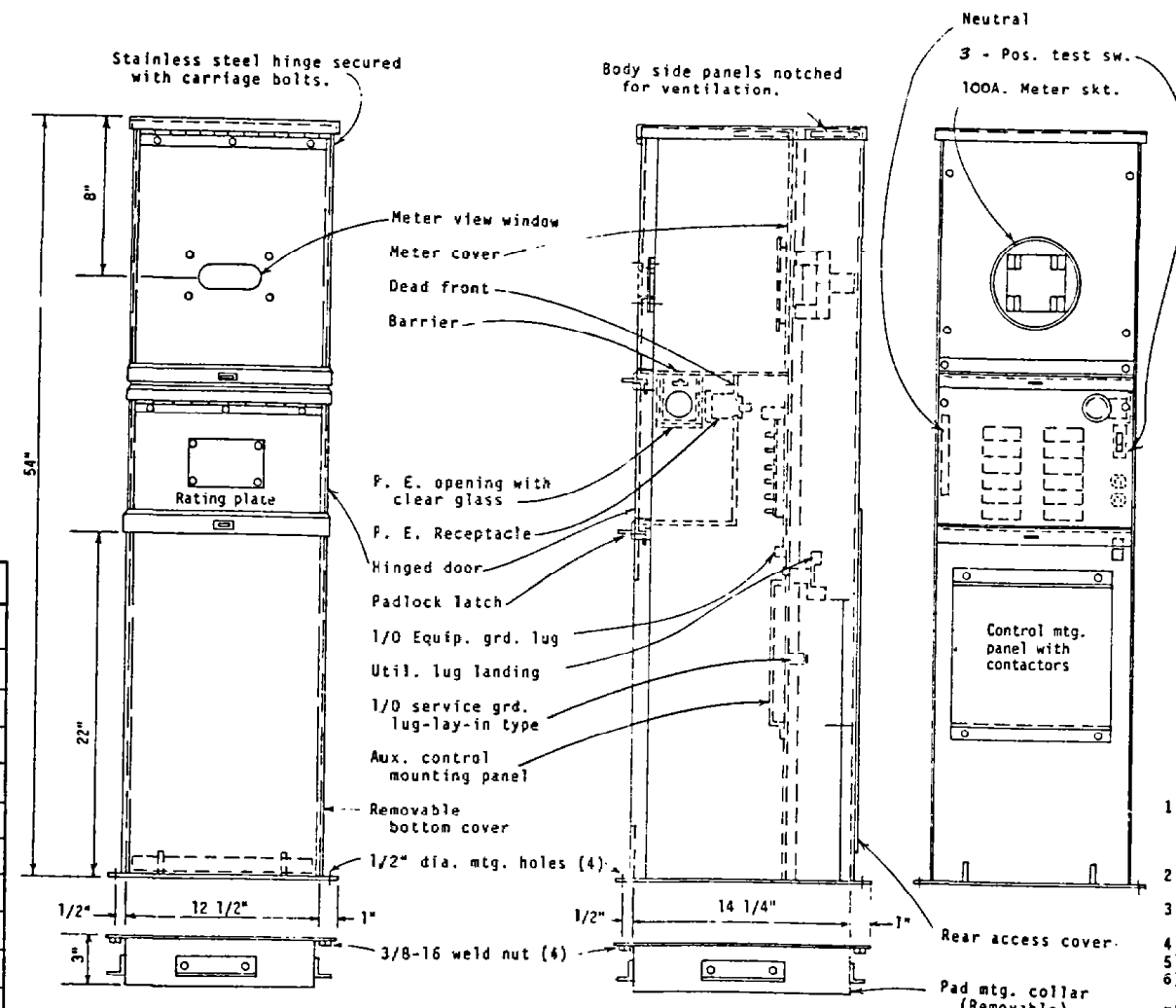
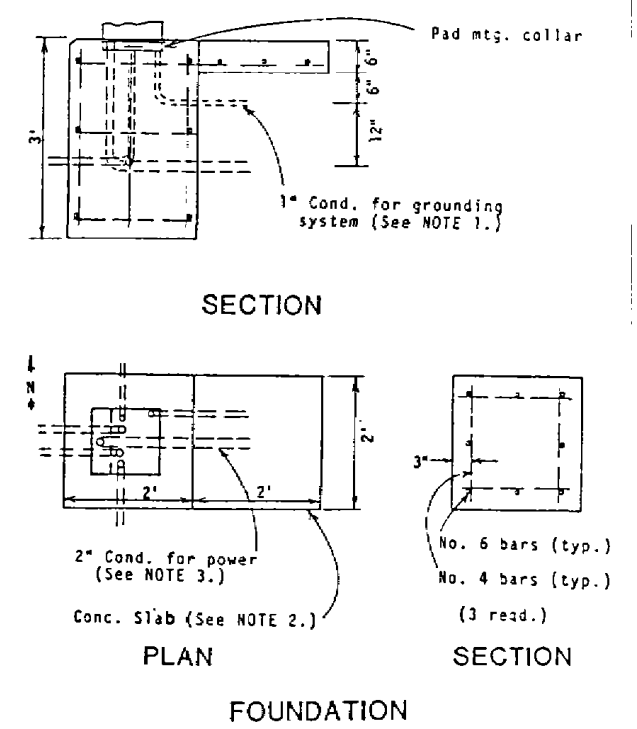


WIRING DIAGRAM


CIRCUIT DIRECTORY			
NO.	DESCRIPTION	AMP.	POLE
1,3	MAIN	100	2
5,7	BREAKER # 1	30	2
9,11	BREAKER # 2	30	2
2,4	BREAKER # 3	30	2
6,8	BREAKER # 4	30	2
10	BREAKER # 5	15	1
12	BREAKER # 6	20	1
	RELAY # 1	30	2
	RELAY # 2	30	2
	RELAY # 3	30	2
	RELAY # 4	30	2
	DEADFRONT		



CONTROLLER PEDESTAL
MYERS # MEUGQ-M100-KCMO
(OR APPROVED EQUAL)



- 1) PROVIDE GROUND ROD(S) AS REQUIRED FOR MAXIMUM OF 25 OHMS RESISTANCE TO GROUND. EXOTHERMIC WELD ONE END OF NO. 6 AWG GROUND CONDUCTOR TO THE GROUND ROD(S) AND BRUSH ON 2 COATS OF AN INSULATING VARNISH TO THE WELDED AREAS.
- 2) CONCRETE SLAB TO PROVIDE SEMI-DRY WORKING AREA IN FRONT OF CONTROLLER CABINET.
- 3) KCP&L TO INSTALL SECONDARY POWER SERVICE (DIRECT BUY) THRU CONTRACTOR INSTALLED 2" CONDUIT AND ELBOW.
- 4) CODE GA. CORROSION RESISTANT JET-COAT STEEL CONSTRUCTION.
- 5) VENTILATED CONSTRUCTION ASSURES CONDENSATION FREE OPERATION.
- 6) COPPER BUSSED CIRCUIT BREAKER INTERIOR WITH PROVISIONS FOR TWELVE FULL ONE INCH POLES.
- 7) ALL TERMINALS APPROVED COPPER OR ALUMINUM WIRE.
- 8) ALL WIRING TO BE COPPER, FACTORY INSTALLED.
- 9) HINGED WEATHERPROOF DOOR WITH PADLOCK PROVISION.
- 10) STANDARD FINISH: ENVIRONMENTAL GREEN BAKED ENAMEL CONFORMING TO ASTM-B117 SPECIFICATIONS, OVER CORROSION RESISTANT ZINC CHROMATE PRIMER.

 AMERICAN PUBLIC WORKS ASSOCIATION KANSAS CITY CHAPTER	
STREET LIGHTING FEED POINT ,TYPE B	STANDARD DRAWING NUMBER SL-2A ADOPTED NOVEMBER 18, 1987